

PEPL ANNUAL REPORT 2025



A MESSAGE FROM OUR BOARD CHAIR

As we reflect on 2025, I am proud to share a year marked by growth, connection, and meaningful impact at the Perth East Public Library. Our library continues to be a place where people come together—not only to learn and explore, but to support one another and strengthen our community.

One of the impactful initiatives this year was the launch of the Giving Shelf, a community pantry made possible through a generous donation from the Teahen Family. This initiative helps supplement school lunches and supports families in need. We are excited to see the pantry grow as it continues to meet more needs in the community.

Our Summer Reading Program also saw increased participation, particularly through park-based programs offered throughout the township. By bringing library programs into local parks, we made them more accessible to patrons who may not be able to visit the physical library, expanding our reach and engagement.

Digital literacy remained a priority in 2025 as Let's Talk Tech continued to evolve. The introduction of 1:1 Tech Time sessions provided personalized support to community members navigating technology, reinforcing the library's role as a trusted resource in an increasingly digital world.

The Library Board focused effort on community engagement to help shape a new strategic plan, set to launch in 2026. These conversations will guide our future and ensure the library continues to reflect the needs and aspirations of the people we serve. Partnerships and outreach remained central to our success. Collaborations with local organizations and schools allowed us to deliver programs beyond our walls. School visits increased in 2025, strengthening connections with students and educators.

We were also encouraged to see in-person visits increase by 33% compared to 2024, highlighting the continued importance of the library as a welcoming, vibrant community space. Additionally, the library was successful in securing two SPCF grants to support the Giving Shelf and the BranchOut for Connection initiative, which expanded access to Wi-Fi hotspots, Kobo e-readers, and our growing seed library.

On behalf of the Board, I extend sincere thanks to our dedicated staff, partners, and community members. Together, we continue to ensure the Perth East Public Library remains a place of connection, life long learning, and opportunity for all.

• **Laura Hallahan, PEPL Board Chair**

TOP NEWS & HIGHLIGHTS OF 2025

Community Pantry

Thanks to the generous donation of the Teahen Family, the library was able to launch a community pantry to help supplement school lunches. Since then the pantry has grown and is open to everyone.

The public are welcome to make donations to keep the pantry open.

Outreach

The library saw an increase in class visits from Perth East schools, teaching students how to access library databases & resources, interact with coding robots, and share in story time.

Programming

New programs hosted at PEPL:

- **Sip & Stitch** - Join staff to learn embroidery & cross stitch.
- **Sourdough Workshop** - learn how to feed & care for your starter, and make your own bread!
- **Tech Time** - Book an appointment with library staff for 1:1 tech help.



Snapshots from 2025

Patrons have access to a **\$494,314.96** collection of books, audiobooks, WiFi hotspots, Nintendo switch, and MORE!

Library hosted **395** programs & welcomed **4,548** participants

The library welcomed **21,839** visitors to the library.
33% increase from 2024!



34 community partnerships delivered programs & services at the library

The library had **52,732** total checkouts in 2025



By the numbers



- **21,839** physical visits to the library
- **117,475** digital visits to website and online catalogue
- **168** new library cards issued
- **3345** public computers & iPad sessions
- **2091** total open hours
- **1120** active patrons
- **195,717** social media interactions

SUPPORT



Collection

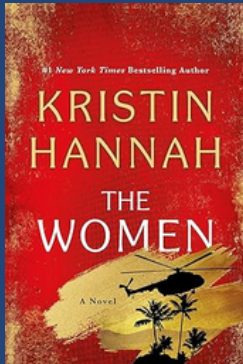
- **41,482** physical items circulated
- **11,090** digital items circulated
- **160** special collection checkouts
- **34,566** items in circulation
- **12,040** Perth East items circulated to neighboring libraries

- **730** reader advisory sessions
- **660** reference questions
- **705** tech support sessions
- **190** Homebound Deliveries

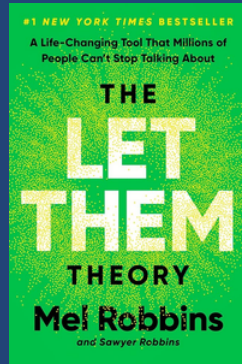


2025 Top Circulated

Adult Fiction



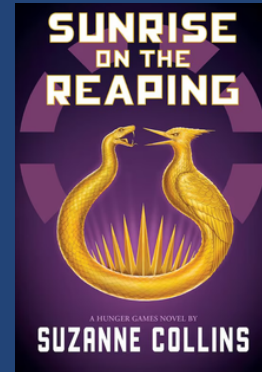
Adult Non-Fiction



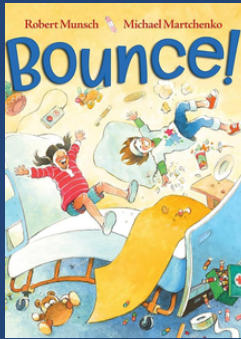
Adult DVD



Young Adult



Picture Book



Junior Fiction



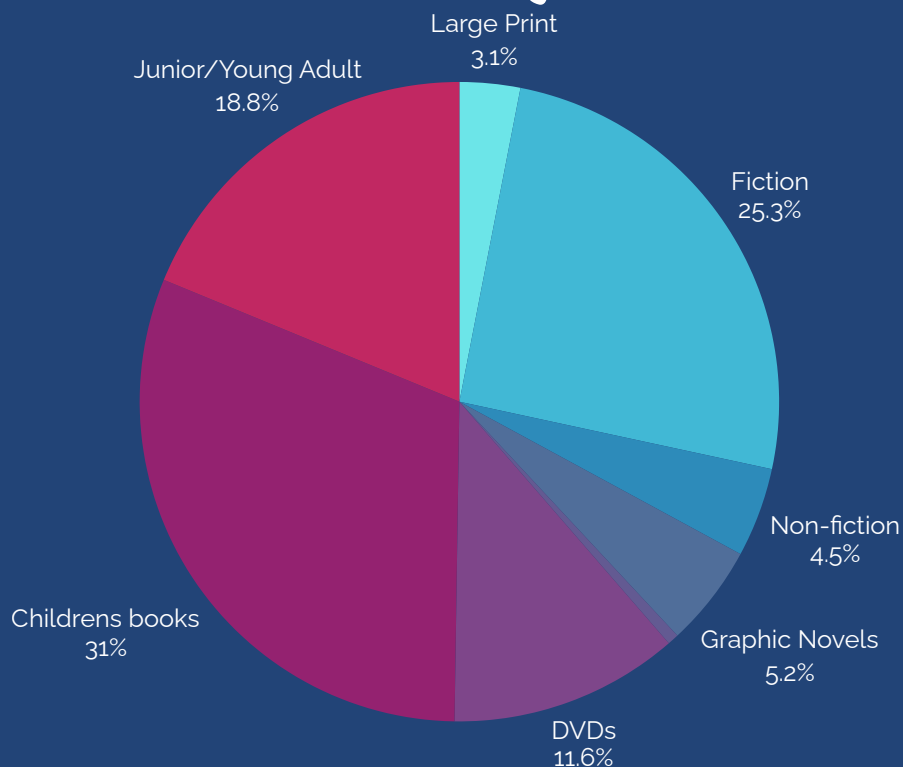
Graphic Novel



Junior DVD

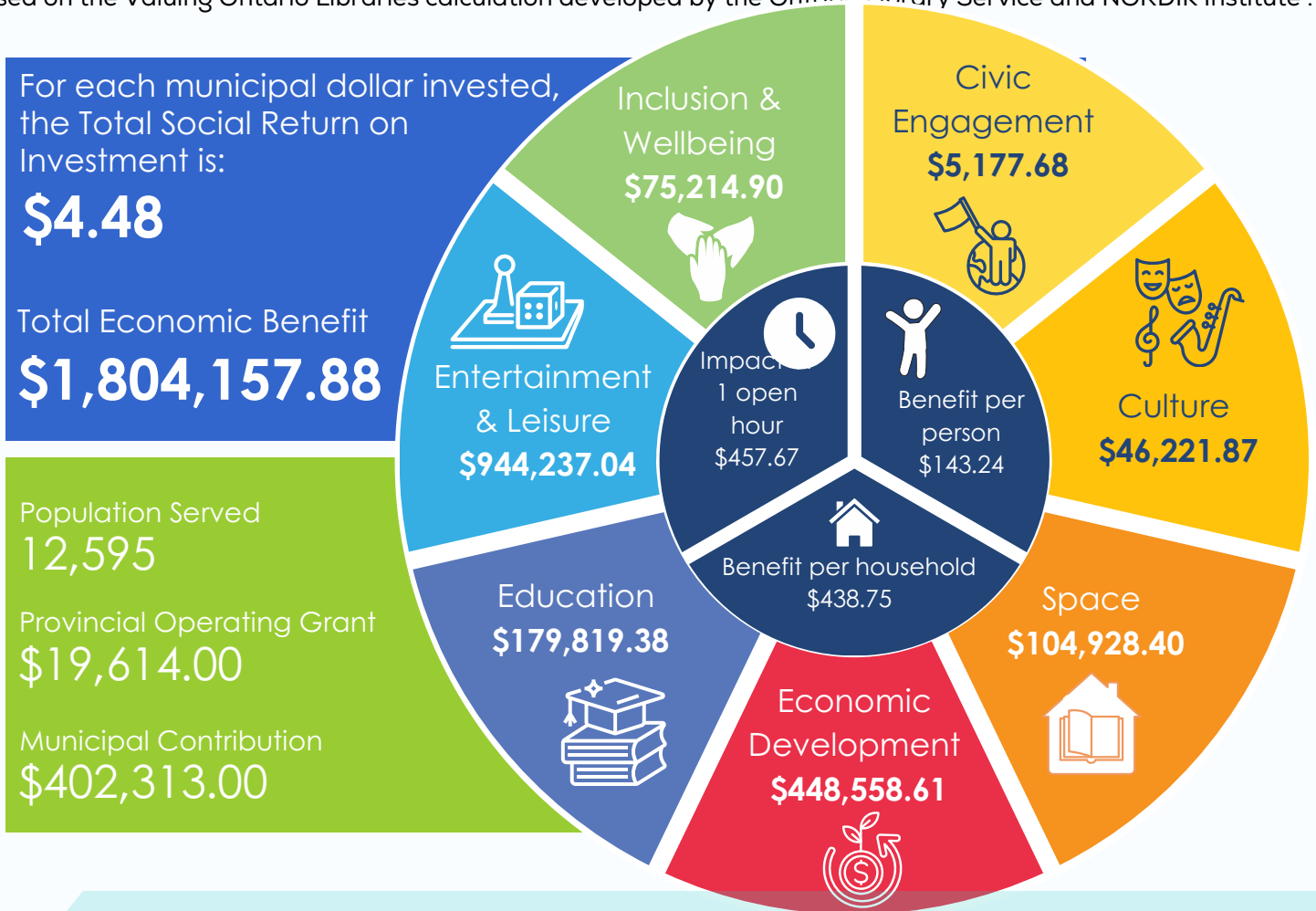


Circulation by Collection



2025 SOCIAL RETURN ON INVESTMENT CALCULATIONS

Based on the Valuing Ontario Libraries calculation developed by the Ontario Library Service and NORDIK Institute.



Our Library is Valued

In 2025, our community members visited the library **21,839** times, or **10** visits per hour. **117,475** visits were made to the library's website, online catalogue, and social media.

Libraries Provide Digital Access

Computer workstations and free wi-fi were used **3,345** times in 2025. Wi-fi hotspots circulated **67** times. Staff provided tech assistance to visitors **705** times.

Libraries Build Social Connections

PEPL provides programs to that support early literacy, digital literacy, social connection, and education. In 2025 we provided **395** programs, which were attended by **4,548** community members.

By the numbers




- **21,839** physical visits to the library
- **117,475** digital visits to website and online catalogue
- **168** new library cards issued
- **3345** public computers & iPad sessions
- **2091** total open hours
- **1120** active patrons
- **195,717** social media interactions

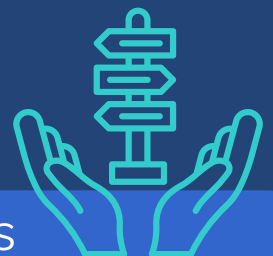
SUPPORT



Collection

- **41,482** physical items circulated
- **11,090** digital items circulated
- **160** special collection checkouts
- **34,566** items in circulation
- **12,040** Perth East items circulated to neighboring libraries

- 
- **730** reader advisory sessions
 - **660** reference questions
 - **705** tech support sessions
 - **190** Homebound Deliveries



By the numbers



- **21,839** physical visits to the library
- **117,475** digital visits to website and online catalogue
- **168** new library cards issued
- **3345** public computers & iPad sessions
- **2091** total open hours
- **1120** active patrons
- **195,717** social media interactions

SUPPORT



Collection

- **41,482** physical items circulated
- **11,090** digital items circulated
- **160** special collection checkouts
- **34,566** items in circulation
- **12,040** Perth East items circulated to neighboring libraries

- **730** reader advisory sessions
- **660** reference questions
- **705** tech support sessions
- **190** Homebound Deliveries



Snapshots from 2025

Patrons have access to a **\$494,314.96** collection of books, audiobooks, WiFi hotspots, Nintendo switch, and MORE!

Library hosted **395** programs & welcomed **4,548** participants

The library welcomed **21,839** visitors to the library.
33% increase from 2024!



34 community partnerships delivered programs & services in Perth East

PEPL is a team of 9, and are supported by volunteers and summer staff.
1 full-time,
4 part-time,
3 students,
1 casual/on-call

